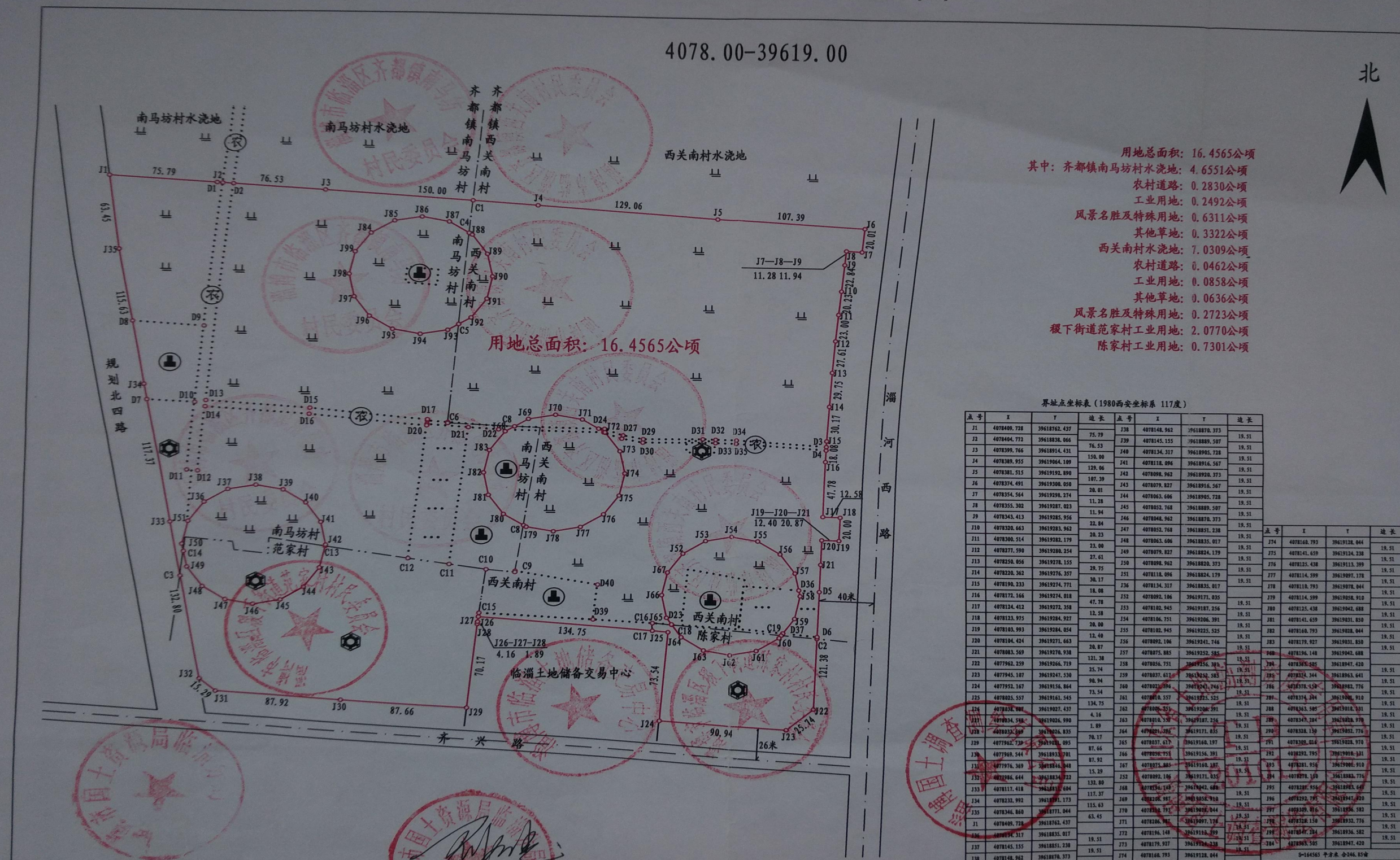


E-2016-083勘测定界图

4078.00-39619.00

北



用地总面积: 16.4565公顷
 其中: 齐都镇南马坊村水浇地: 4.6551公顷
 农村道路: 0.2830公顷
 工业用地: 0.2492公顷
 风景名胜及特殊用地: 0.6311公顷
 其他草地: 0.3322公顷
 西关南村水浇地: 7.0309公顷
 农村道路: 0.0462公顷
 工业用地: 0.0858公顷
 其他草地: 0.0636公顷
 风景名胜及特殊用地: 0.2723公顷
 稷下街道范家村工业用地: 2.0770公顷
 陈家村工业用地: 0.7301公顷

用地总面积: 16.4565公顷

界址点坐标表 (1980西安坐标系 117度)

点号	X	Y	边长	点号	X	Y	边长
J1	4078499.728	39618762.437	75.79	J38	4078148.962	39618878.373	19.51
J2	4078464.772	39618838.066	76.53	J39	4078145.155	39618889.507	19.51
J3	4078399.766	39618914.431	150.00	J40	4078134.317	39618905.728	19.51
J4	4078389.955	39619064.189	129.06	J41	4078118.096	39618916.567	19.51
J5	4078381.515	39619192.890	107.39	J42	4078098.962	39618928.373	19.51
J6	4078374.491	39619300.050	28.01	J43	4078079.827	39618916.567	19.51
J7	4078354.564	39619398.274	11.94	J44	4078063.696	39618905.728	19.51
J8	4078355.302	39619387.023	11.94	J45	4078052.768	39618889.507	19.51
J9	4078343.413	39619285.956	22.84	J46	4078048.962	39618878.373	19.51
J10	4078320.663	39619283.962	20.23	J47	4078052.768	39618851.238	19.51
J11	4078300.514	39619282.179	23.00	J48	4078063.696	39618835.017	19.51
J12	4078277.590	39619280.254	27.61	J49	4078079.827	39618824.179	19.51
J13	4078250.056	39619278.155	29.75	J50	4078098.962	39618828.373	19.51
J14	4078230.362	39619276.357	30.17	J51	4078118.096	39618824.179	19.51
J15	4078190.233	39619274.771	18.08	J52	4078134.317	39618835.017	19.51
J16	4078172.166	39619274.018	47.78	J53	4078102.945	39619187.256	19.51
J17	4078124.412	39619272.358	12.58	J54	4078106.751	39619206.391	19.51
J18	4078123.975	39619284.927	28.00	J55	4078102.945	39619225.525	19.51
J19	4078103.993	39619284.054	12.48	J56	4078092.104	39619241.746	19.51
J20	4078104.424	39619271.663	20.87	J57	4078075.885	39619252.585	19.51
J21	4078083.569	39619270.938	121.28	J58	4078056.751	39619256.393	19.51
J22	4077982.259	39619266.719	25.74	J59	4078037.611	39619252.585	19.51
J23	4077945.107	39619247.530	98.94	J60	4078022.094	39619241.746	19.51
J24	4077932.167	39619156.864	73.54	J61	4078018.557	39619223.255	19.51
J25	4077825.557	39619161.545	134.75	J62	4078000.851	39619200.591	19.51
J26	4077828.988	39619027.437	4.16	J63	4078018.557	39619187.256	19.51
J27	4077804.588	39619026.990	1.89	J64	4078021.094	39619171.035	19.51
J28	4077803.509	39619026.835	70.17	J65	4078037.611	39619160.197	19.51
J29	4077942.739	39619081.095	87.66	J66	4078039.751	39619156.391	19.51
J30	4077948.544	39618933.791	87.92	J67	4078025.885	39619168.107	19.51
J31	4077976.369	39618844.248	15.29	J68	4078022.094	39619171.035	19.51
J32	4077946.644	39618834.722	132.80	J69	4078034.149	39619042.680	19.51
J33	4078117.418	39618811.604	117.37	J70	4078028.987	39619036.910	19.51
J34	4078232.992	39618791.173	115.63	J71	4078034.149	39619010.044	19.51
J35	4078346.860	39618771.944	63.45	J72	4078048.962	39618997.178	19.51
J36	4078409.728	39618762.437	19.51	J73	4078106.148	39619118.399	19.51
J37	4078145.155	39618851.238	19.51	J74	4078179.927	39619128.044	19.51
J38	4078148.962	39618878.373	19.51	J75	4078168.793	39619128.044	19.51
J76	4078141.659	39619124.238	19.51	J77	4078125.430	39619113.399	19.51
J77	4078114.599	39619097.178	19.51	J78	4078114.599	39619078.044	19.51
J79	4078114.599	39619058.610	19.51	J80	4078125.430	39619042.680	19.51
J81	4078141.659	39619031.850	19.51	J82	4078168.793	39619028.044	19.51
J83	4078179.927	39619031.850	19.51	J84	4078196.148	39619042.680	19.51
J85	4078205.424	39619042.680	19.51	J86	4078232.992	39619042.680	19.51
J87	4078250.056	39619042.680	19.51	J88	4078277.590	39619042.680	19.51
J89	4078277.590	39619042.680	19.51	J89	4078300.514	39619042.680	19.51
J90	4078277.590	39619042.680	19.51	J90	4078320.362	39619042.680	19.51
J91	4078277.590	39619042.680	19.51	J91	4078346.860	39619042.680	19.51
J92	4078277.590	39619042.680	19.51	J92	4078374.491	39619042.680	19.51
J93	4078277.590	39619042.680	19.51	J93	4078381.515	39619042.680	19.51
J94	4078277.590	39619042.680	19.51	J94	4078389.955	39619042.680	19.51
J95	4078277.590	39619042.680	19.51	J95	4078399.766	39619042.680	19.51
J96	4078277.590	39619042.680	19.51	J96	4078409.728	39619042.680	19.51
J97	4078277.590	39619042.680	19.51	J97	4078464.772	39619042.680	19.51
J98	4078277.590	39619042.680	19.51	J98	4078499.728	39619042.680	19.51
J99	4078277.590	39619042.680	19.51	J99	4078544.564	39619042.680	19.51
J100	4078277.590	39619042.680	19.51	J100	4078555.302	39619042.680	19.51

绘图日期:
审核日期:

1:3000

绘图员: 刘现伟
审核员: 邵国奎